

INTERNATIONAL RALLY WHANGAREI

www.rallywhangarei.co.nz

ROAD CLOSURE APPLICATION

#RALLYWHANGAREI

25-27 SEPTEMBER 2026



Cross Country Rentals


CRÈME
INSURANCE


Whangarei
District Council

2026 BRIAN GREEN PROPERTY GROUP
NZRC
NEW ZEALAND RALLY CHAMPIONSHIP


omega
rental cars
Up front and honest!

TRAFFIC SAFE NZ 


Kaipara
DISTRICT
Kaipara he Whangarei - Two oceans Two Harbours

MotorSport
New Zealand

CLOSURE OVERVIEW

APPLICATION BY	:	RALLY NEW ZEALAND
TO	:	WHANGAREI DISTRICT COUNCIL / KAIPARA DISTRICT COUNCIL
FOR	:	TEMPORARY ROAD CLOSURE

To ensure safety, Rally New Zealand will be restricting spectator access for a distance of 100 metres from the specified road and all adjoining side roads.

The road closure times in this application are based on the maximum time allowance for competitors running at the end of the field. In the normal course we would anticipate that we would be able to open the road approximately 60 minutes earlier.

Rally New Zealand recommends that Council review their grading timetable so that the planned road grading around the date of the rally is made immediately following the Rally. This will help to minimise both costs and resident concerns.

Wednesday to Sunday

- **Service Park:** 8:00am Wednesday 23rd to 8pm Sunday 27th September(WDC)

Friday – 25th September 2026

- **Shakedown:** 10am to 3pm (WDC)
- **Ceremonial Start:** 3:00pm to 7:00pm (WDC)

Saturday – 26th September 2026

- **Dargaville Service Park** - 12.5 hours from 5:00am to 5:30pm (KDC)
- **SS1 Houto** – 4.5 hours from 5:00am to 9:00am (WDC / KDC)
- **SS2/3 Waihue** – 7 hours from 6:00am to 12:00pm (KDC)
- **SS4/6 Greenhill** - 7.5 hours from 09:00am to 4:00pm (KDC)
- **SS5/7 Tokatoka** – 7 hours from 10:00am to 5:00 pm (KDC)
- **SS8 Kirikopuni** – 4.5 hours from 2:00 pm to 6:00 pm (WDC / KDC)
- **SS9/10 Pohe island** – 8 hours from 2:00 pm to 10:00 pm / Bridge Closes: 2:45pm / Bridge Reopens: 09:00pm (WDC)

Sunday – 27th September 2026

- **SS11 /15 Ruarangi** – 9 Hours from 6:00 to 2:00pm (WDC)
- **SS12 / 16 Waikiekie** – 9 hours from 6:00am to 2:30pm (WDC / KDC)
- **SS13 /17 Omana** – 9 Hours from 7:00 to 3:30pm (WDC / KDC)
- **SS14 / 18 Bull** – 8.5 Hours from 7:30 to 4:00pm (WDC / KDC)
- **Finish** – Works under the service park closure (WDC)

[VIEW THE FULL STAGE MAP>>](#)

POHE ISLAND SERVICE PARK

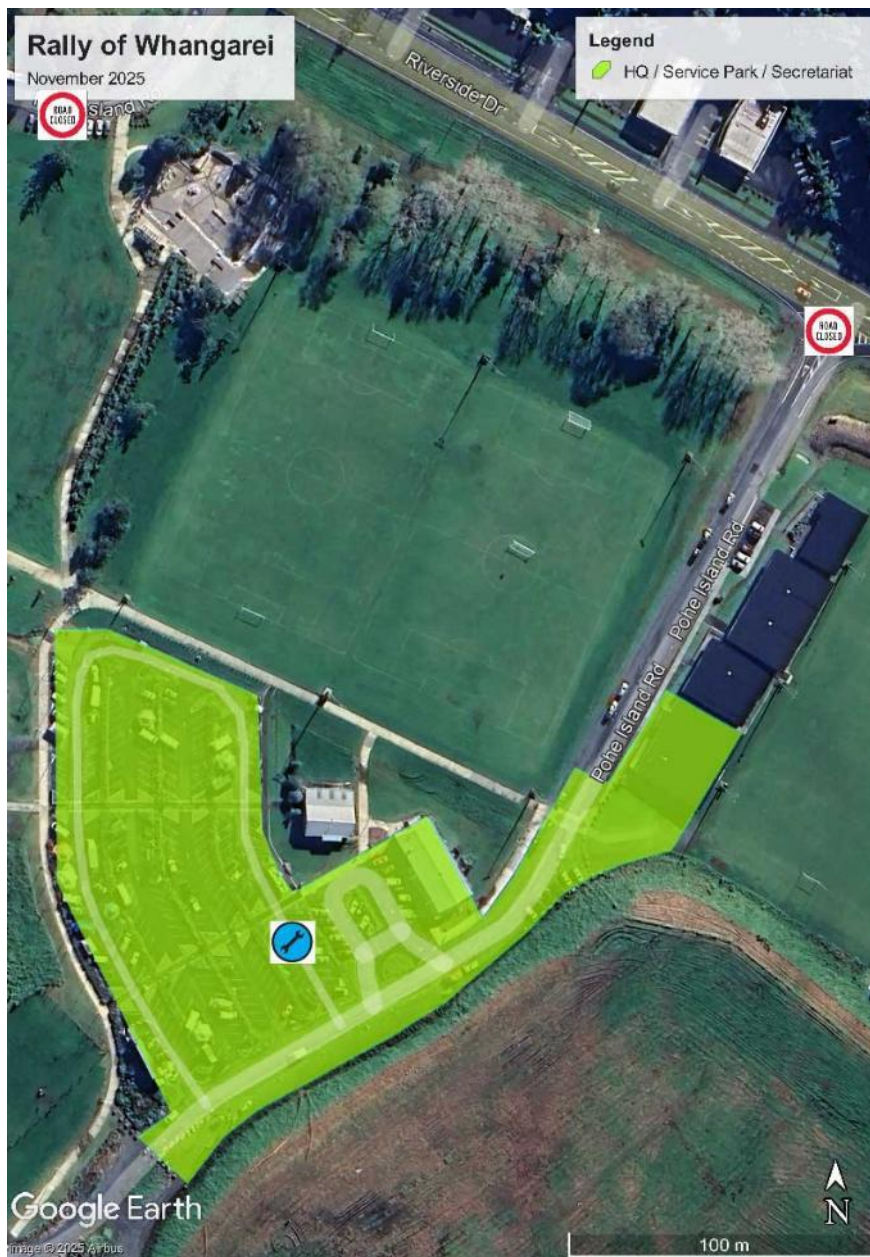
⇒ **WEDNESDAY 23RD SEPTEMBER TO SUNDAY 27TH SEPTEMBER 2026**

ROAD CLOSURE TIME/S: 8:00AM WEDNESDAY 23RD TO 8:00PM SUNDAY 27TH SEPTEMBER

WDC CLOSURES

Road / Closure Description:

Pohe Island Rd - All of Pohe Island Rd and Car Park - as per application to WDC Venues & Events Team
Period of closure.



SHAKEDOWN – POHE ISLAND

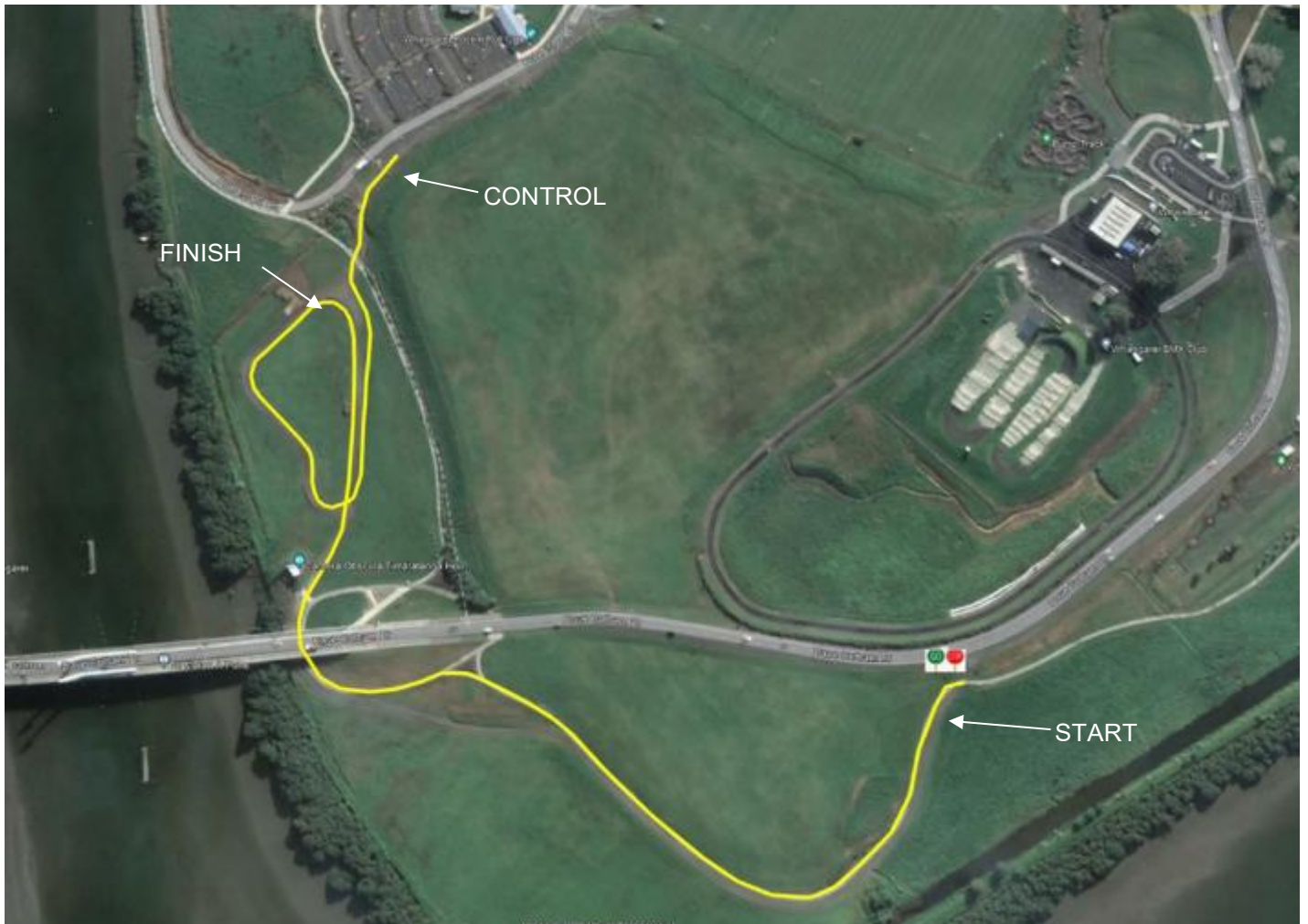
⇒ **FRIDAY 25th SEPTEMBER 2026**

ROAD CLOSURE TIME/S: 10:00AM TO 3:00PM

WDC CLOSURES

Road / Closure Description:

POHE ISLAND WALKWAY – as per application to WDC Venues & Events Team



Comments: (NOT a closure) Temporary traffic management WON'T be required as the cars will be coming down Dave Callum Drive and turning LEFT onto the Pohe Stage.

CEREMONIAL START CAMERON STREET MALL

⇒ **FRIDAY 25th SEPTEMBER 2026**

ROAD CLOSURE TIME/S: 3:00PM TO 7:00PM

WDC CLOSURES

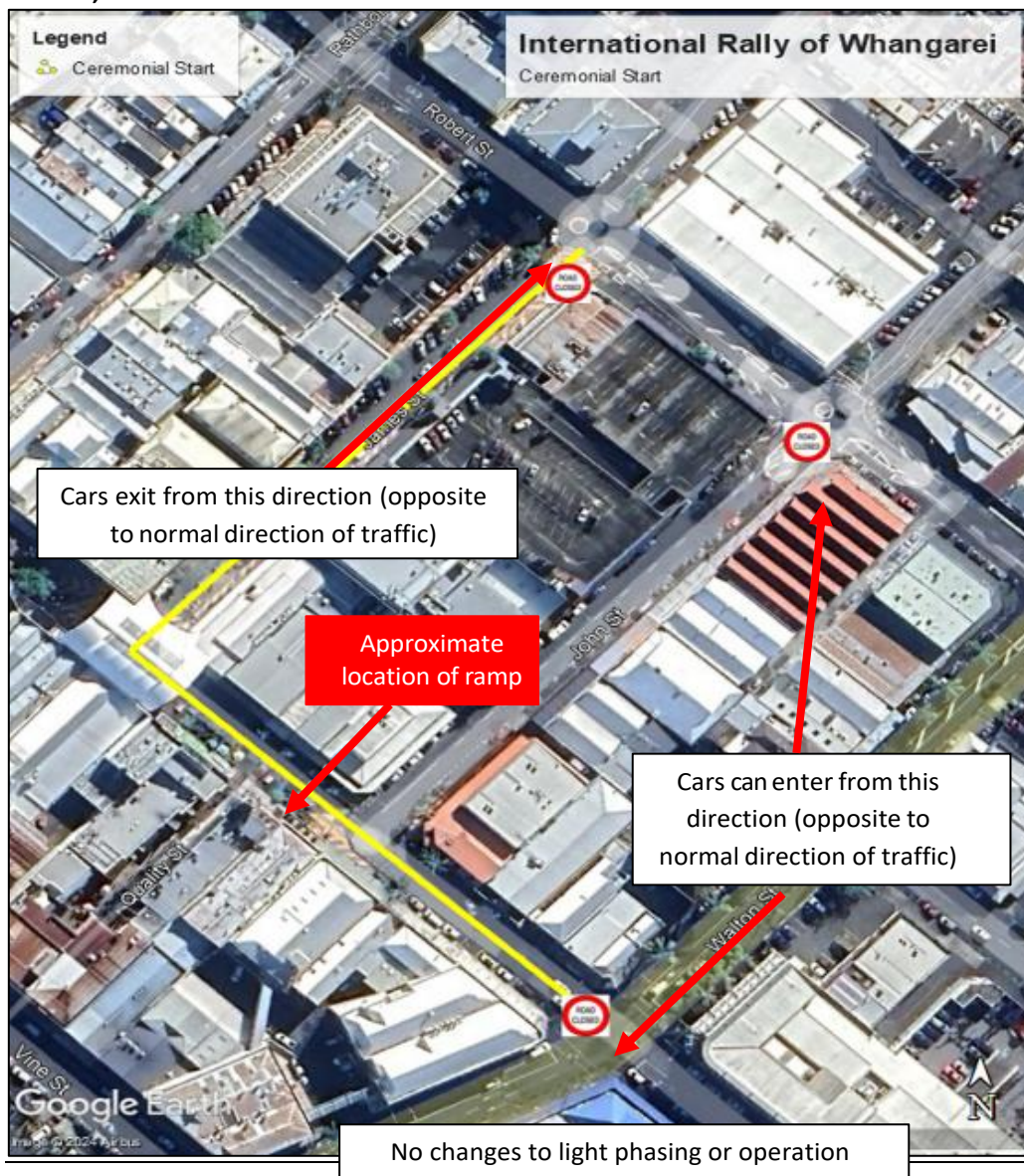
Road / Closure Description:

CAMERON STREET MALL AREA

James Street, from Robert Street to Cameron Street

John Street, from Robert Street to Cameron Street

Cameron Street, from James Street to Walton Street



DARGAVILLE SERVICE PARK

⇒ **SATURDAY 26TH SEPTEMBER 2026**

ROAD CLOSURE TIME/S: FOR 12.5 HOURS FROM 5:00AM TO 5:30PM

KDC CLOSURES

Road / Closure Description:

1. **Hokianga Road** from the intersection of Victoria Street to the intersection with Parenga Street.
2. **Parenga Street** from the intersection of Hokianga Road to the intersection with Kapia Street.
3. **Kapia Street** from the intersection of Parenga Road to the intersection with Victoria Street.
4. **Totara Street** from the intersection of Kapia Street to the intersection with Victoria Street, with a soft closure on the end of this to allow for the Truck Stop and vehicle access to the back of Countdown if required.



SS 1 HOUTO

⇒ **SATURDAY 26TH SEPTEMBER 2026**

ROAD CLOSURE TIME/S: FOR 4 HOURS FROM 5:00AM TO 9:00AM

WDC CLOSURES

Road / Closure Description:

Houto Road, from the intersection of State Highway 15 (Mangakahia Road) to the intersection with the WDC/ KDC Boundary.

- including intersection/s with
 - Norvill Road (No Exit)
 - Morgan Road (No Exit)

KDC CLOSURES

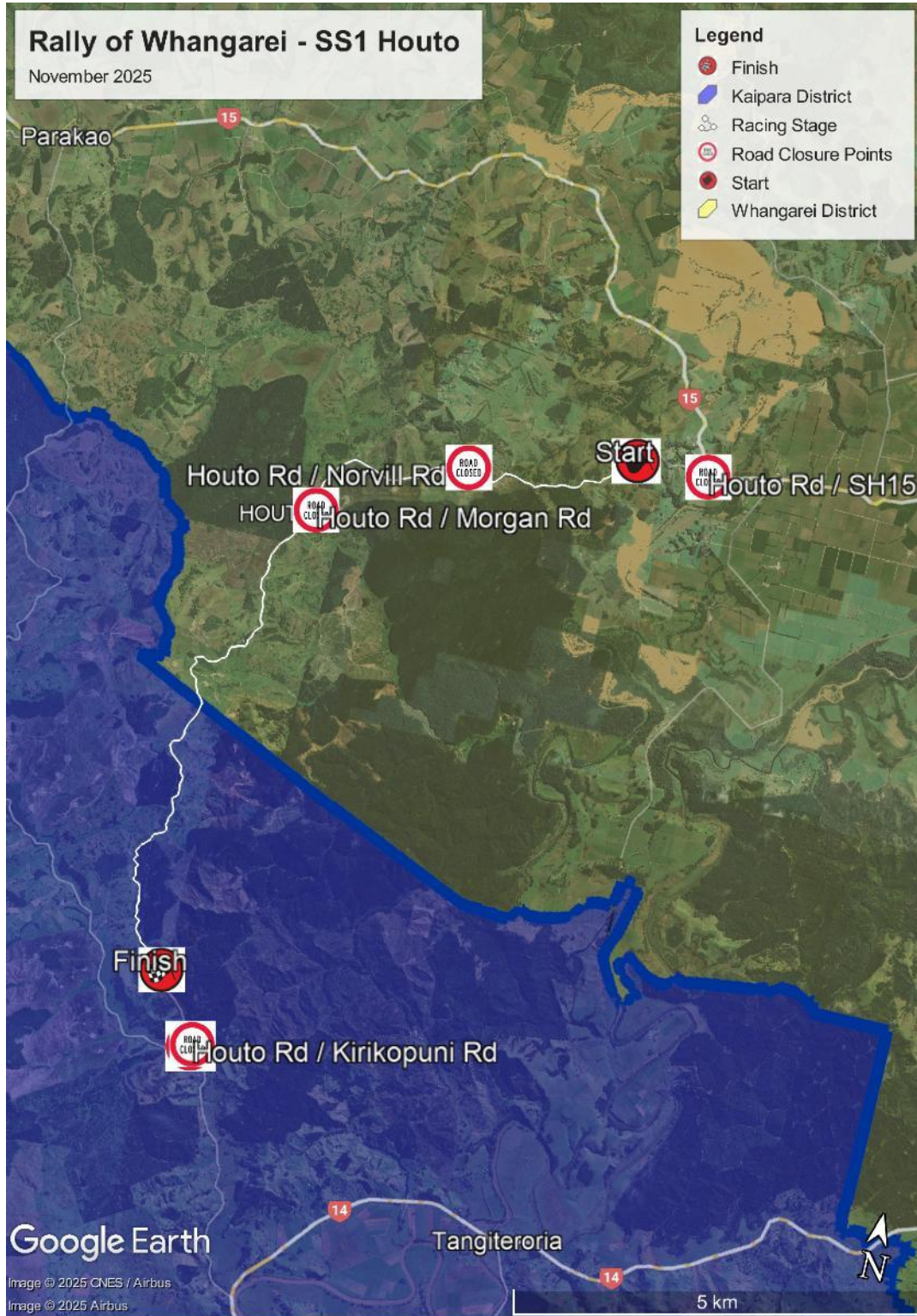
Road / Closure Description:

Houto Road from the WDC / KDC Boundary to the intersection with SH14.

- including intersection/s with
 - Kirikopuni Valley Road

NOTE this extends past the icons on the map to SH14 – we may extend the stage, so we have put in the closure to allow for this change.

SS 1 MAP



SS 2 & 3 WAIHUE

⇒ **SATURDAY 26TH SEPTEMBER 2026**

ROAD CLOSURE TIME/S: FOR 6 HOURS FROM 6:00AM TO 12:00PM

KDC CLOSURES

Road / Closure Description:

Waihue Road from the intersection of Waimata Road to the intersection with Opanake Road.

- including intersection/s with
 - Lawson Road (No Exit)
 - Nichols Road (Possible No Exit as seems to go into the forest via other roads)
 - Middleton Road
 - Waimata Road

Opanake Road from the intersection of Waihue Road to the intersection with Paraore W Road.

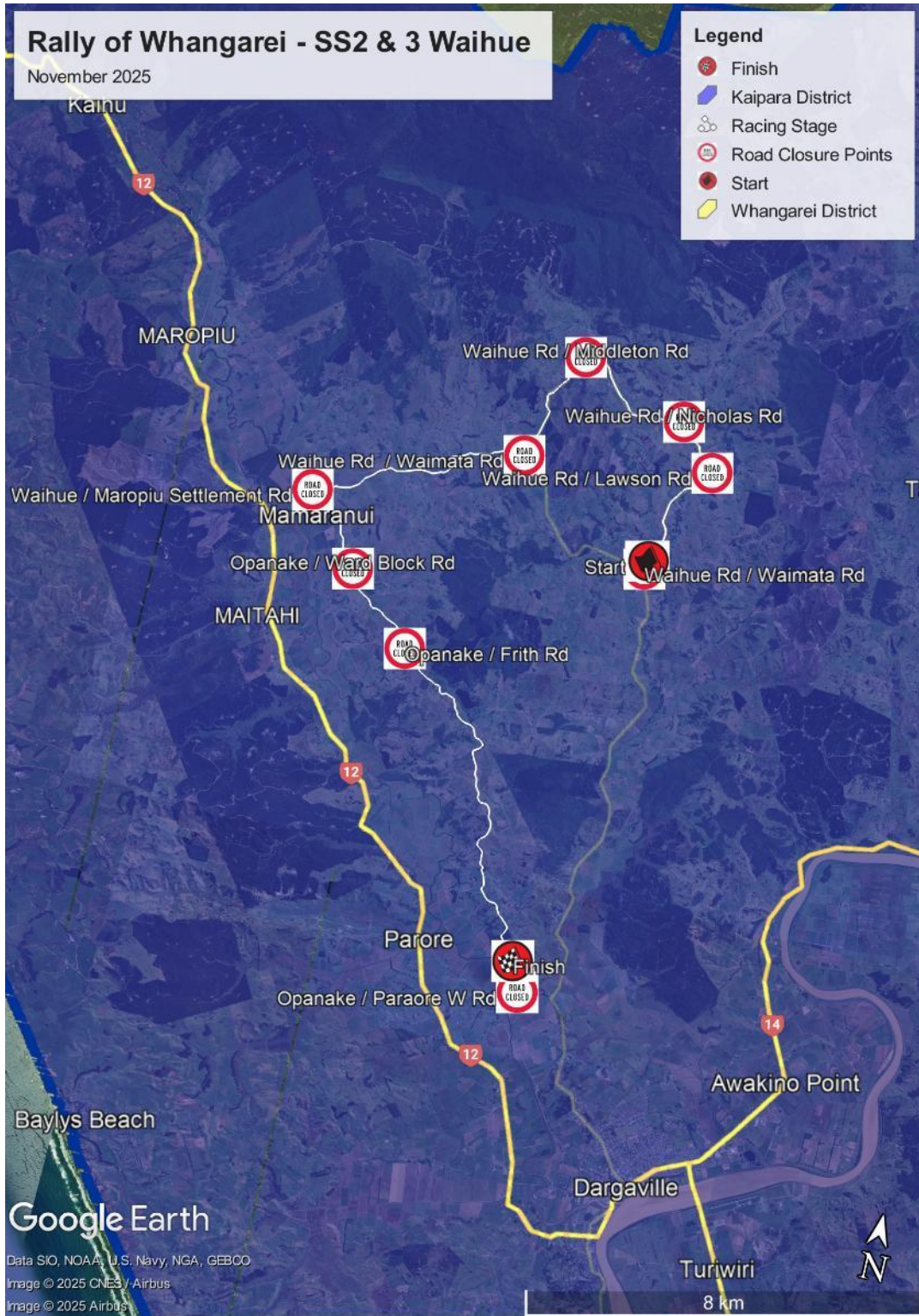
- including intersection/s with
 - Ward Block Road (No Exit)
 - Frith Road (No Exit)

WDC CLOSURES

No roads in WDC for this stage.

Estimated Number of Cars: 60

SS 2 & 3 MAP



SS 4 & 6 GREENHILL

⇒ **SATURDAY 26TH SEPTEMBER 2026**

ROAD CLOSURE TIME/S: FOR 7 HOURS FROM 09:00AM TO 4:00PM

KDC CLOSURES

Road / Closure Description:

Oparakau Road from the intersection of SH12 to the intersection with Parahi Road

- including intersection/s with
 - Ball Road
 - Tana Road
 - Ovens Road (no Exit)

Parahi Road from the intersection of Oparakau Road to the intersection with Parahi Outlet Road & Birch Road.

- including intersection/s with
 - Smith Road (No Exit)
 - Gleeson Road (No Exit)

Parahi Outlet Road from the intersection of Parahi Road & Birch Road to the intersection with Rehia Road & Oparakau Road

- including intersection/s with
 - Gleeson Road (No Exit)
 - Bradley Road (No Exit)

Oparakau Road from the intersection of Parahi Outlet Road & Rehia Road to the intersection with Access Road.

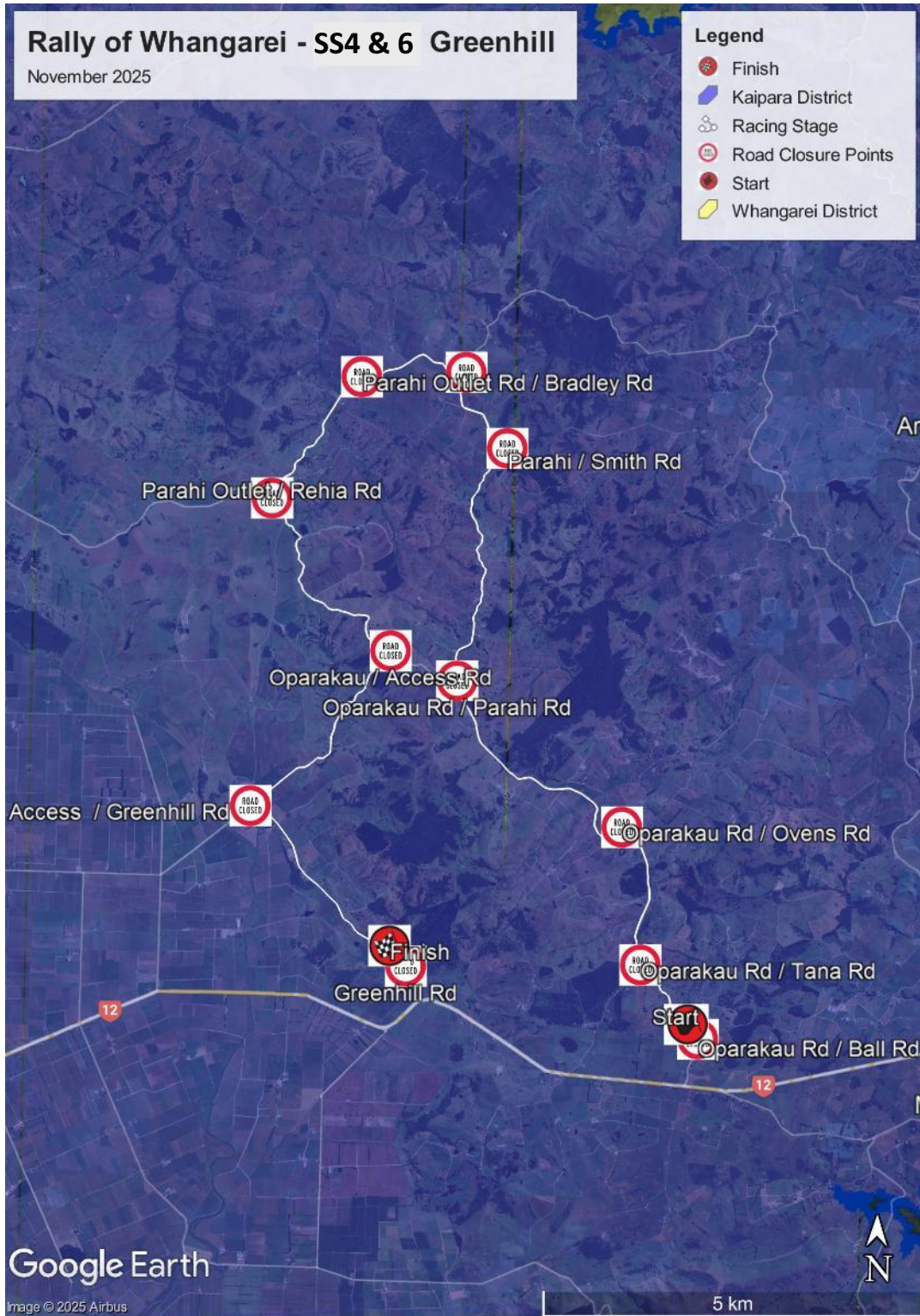
Access Road from the intersection of Oparakau Road to the intersection with Greenhill Road.

Greenhill Road from the intersection of Access Road to the intersection with SH12sssss.

WDC CLOSURES

No roads in WDC for this stage.

SS 4 & 6 GREENHILL MAP



SS 5 & 7 TOKATOKA

⇒ **SATURDAY 26TH SEPTEMBER 2026**

ROAD CLOSURE TIME/S: FOR 7 HOURS FROM 10:00AM TO 5:00 PM

KDC CLOSURES

Road / Closure Description:

Tokatoka Road from the intersection of Rehia Road to the intersection with Dreadon Road.

- including intersection/s with
 - Blong Road
 - Inch Road (Crossroads, one side is No Exit when the stage is closed)
 - Simpkin Road (No Exit when the stage is closed)

Dreadon Road from the intersection of Tokatoka Road to the intersection with Simpkin Road & Ringrose Road.

Ringrose Road from the intersection of Dreadon Road & Simpkin Road to the intersection with Shirley Road.

Shirley Road from the intersection of Ringrose Road to the intersection with Rehia Road.

- including intersection/s with
 - Bentley Road (No Exit)

Rehia Road from the intersection of Shirley Road to the intersection with Tokatoka Road.

- including intersection/s with
 - Whenuanui Reserve Road
 - Dunn Road
 - Inch Road (No Exit when the stage is closed)

WDC CLOSURES

No roads in WDC for this stage.

SS 5 & 7 TOKATOKA MAP



SS 8 KIRIKOPUNI

⇒ **SATURDAY 26TH SEPTEMBER 2026**

ROAD CLOSURE TIME/S: FOR 4.0 HOURS FROM 2:00 PM TO 6:00 PM

KDC CLOSURES

Road / Closure Description:

Kirikopuni Valley Road from the intersection of Houto Road to the intersection with the WDC / KDC Boundary.

- including intersection/s with
 - Sommerville Road

WDC CLOSURES

Road / Closure Description:

Kirikopuni Road from the intersection of WDC / KDC Boundary to the intersection with **SH15** (Mangakahia Road).

SS 8 KIRIKOPUNI MAP



SSS9 & SSS10 POHE ISLAND

⇒ **SATURDAY 26TH SEPTEMBER 2026**

ROAD CLOSURE TIME/S: FOR 8 HOURS FROM 2:00 PM TO 10:00 PM

BRIDGE CLOSURES: 2:45PM

BRIDGE REOPENS: 9:00PM

WDC CLOSURES

Road / Closure Description:

Te Matau a Pohe Bridge

Pohe Island Walkway

Dave Culham Drive from Port Road to Riverside Drive.

KDC CLOSURES

No roads in KDC for this stage

SSS9 & SSS10 POHE ISLAND MAP



SS11 & 15 RUARANGI

⇒ **SUNDAY 27TH SEPTEMBER 2026**

ROAD CLOSURE TIME/S: FOR 8 HOURS FROM 6:00 TO 2.00PM

WDC CLOSURES

Road / Closure Description:

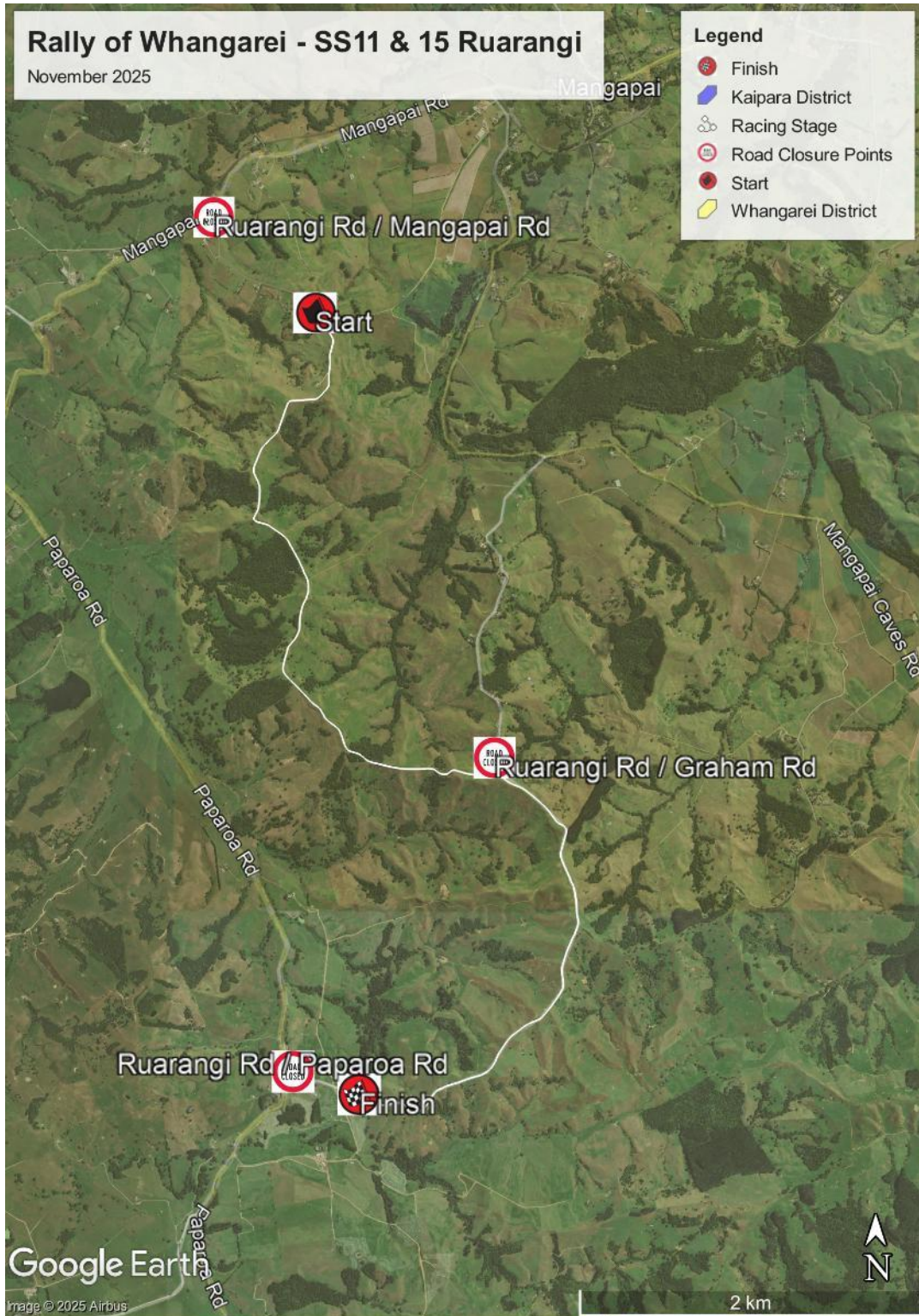
Ruarangi Road from the intersection of Mangapai Road to the intersection with Paparoa Road.

- including intersection/s with
 - Graham Road

KDC CLOSURES

No roads in KDC for this stage

SS11 & 15 RUARANGI MAP



SS12 & 16 WAIKIEKIE

⇒ **SUNDAY 27TH SEPTEMBER 2026**

ROAD CLOSURE TIME/S: FOR 9.5 HOURS FROM 6:00AM TO 2:30PM

WDC CLOSURE

Road / Closure Description:

Waikiekie N Road from the intersection of Paparoa Road to the intersection with Walker Road.

Walker Road from the intersection of Waikiekie N Road to the intersection with Neville Road & Hosking Road.

Neville Road from the intersection of Walker Road & Hosking Road to the intersection with Neville Road & Harrison Road.

Harrison Road from the intersection of Neville Road to the WDC / KDC Boundary

KDC CLOSURE

Road / Closure Description:

Harrison Road from the intersection of WDC / KDC Boundary to the intersection with Mason Road.

- including intersection/s with
 - Keay Airstrip Road (No Exit)
 - Cassidy Road
 - Central Road

Mason Road from the intersection of Harrison Road to the intersection with Stead Road.

Stead Road from the intersection of Harrison Road to the intersection with the WDC / KDC Boundary.

- including intersection/s with
 - Taylor Road

WDC CLOSURE

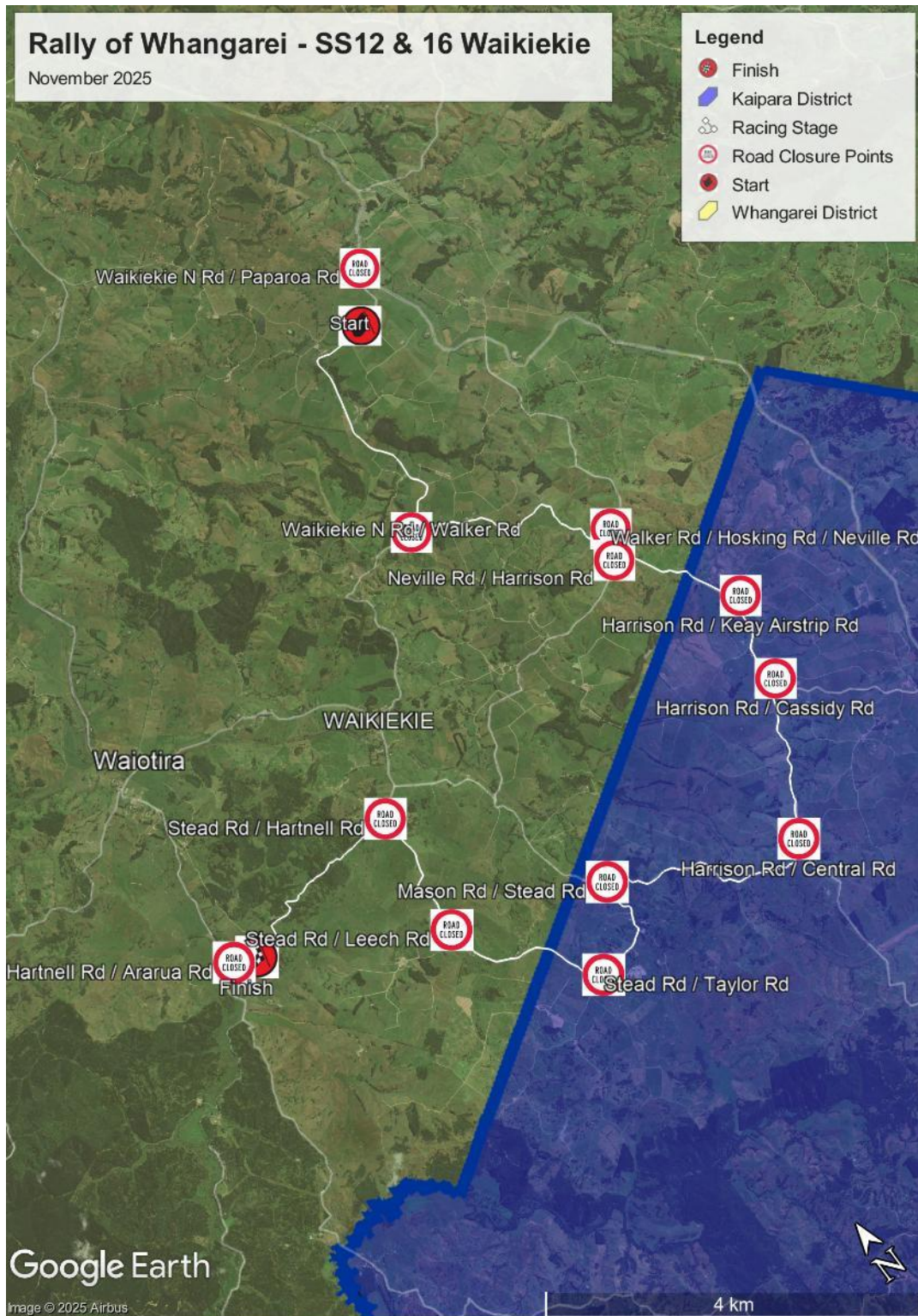
Road / Closure Description:

Stead Road from the intersection of the WDC / KDC Boundary to the intersection with Hartnell Road.

- including intersection/s with
 - Leech Road (No Exit)

Hartnell Road from the intersection of Stead Road to the intersection with Ararua Road.

SS12 & 16 WAIKIEKIE MAP



SS13 & 17 OMANA

⇒ **SUNDAY 27TH SEPTEMBER 2026**

ROAD CLOSURE TIME/S: FOR 8.5 HOURS FROM 7:00AM TO 3:30PM

WDC CLOSURE

Road / Closure Description:

Omana Road from the intersection of Tauraroa Road to the intersection with the WDC / KDC Boundary.

- including intersection/s with
 - Leslie Road (No Exit)
 - Kaitaringa Road (No Exit)

KDC CLOSURE

Road / Closure Description:

Omana Road from the intersection of the WDC / KDC Boundary to the intersection with Pikiwahine Road.

Pikiwahine Road from the intersection of Omana Road to the WDC / KDC Boundary Road.

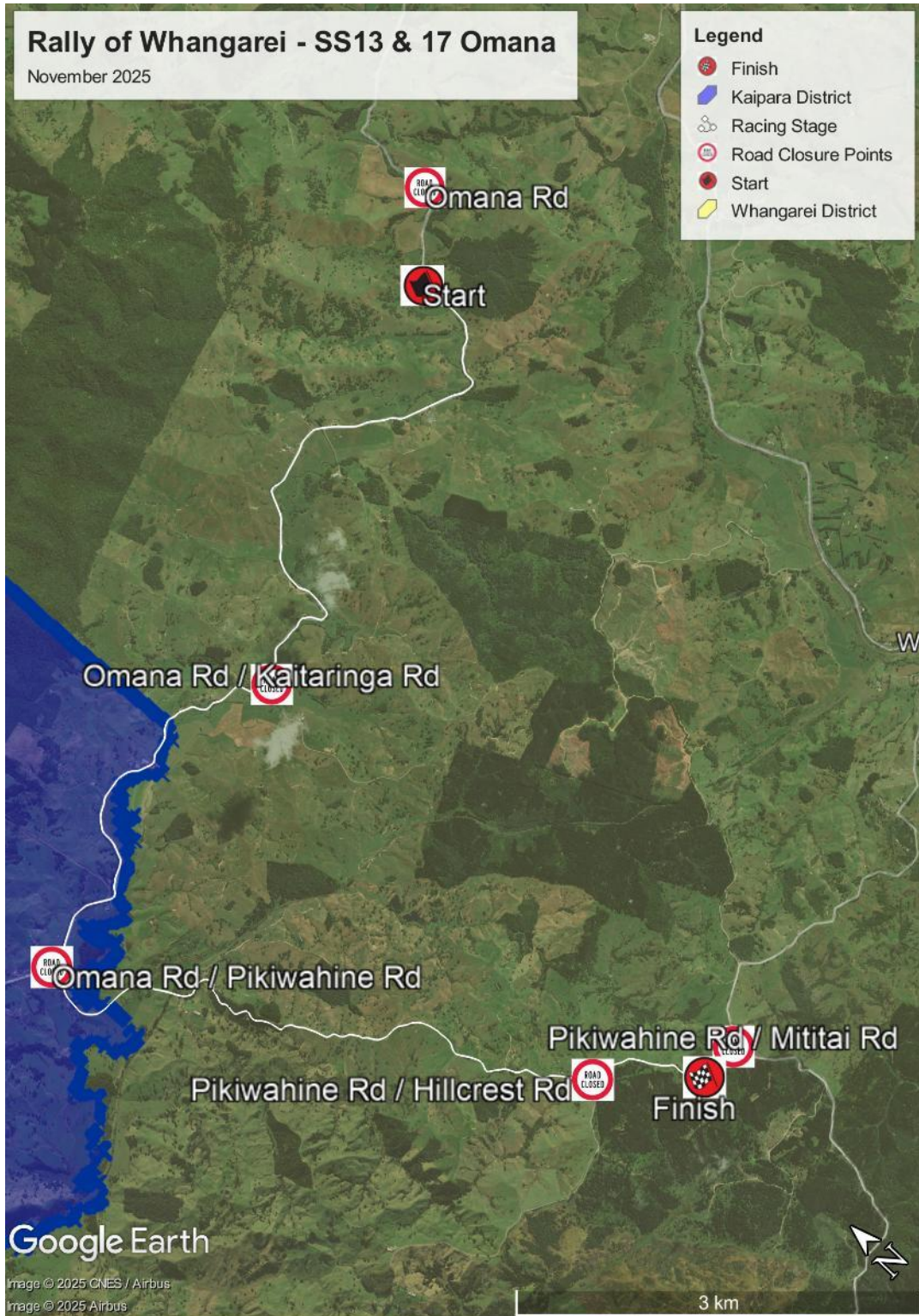
WDC CLOSURE

Road / Closure Description:

Pikiwahine Road from the WDC / KDC Boundary to the intersection with Mititai Road.

- including intersection/s with
 - Hillcrest Road (No Exit)

SS13 & 17 OMANA MAP



SS14 & 18 BULL

⇒ **SUNDAY 27TH SEPTEMBER 2026**

ROAD CLOSURE TIME/S: FOR 8.5 HOURS FROM 7:30 TO 4:00PM

WDC CLOSURE

Road / Closure Description:

Bull Road from the intersection of Ararua Road to the intersection with the WDC / KDC Boundary.

KDC CLOSURE

Road / Closure Description:

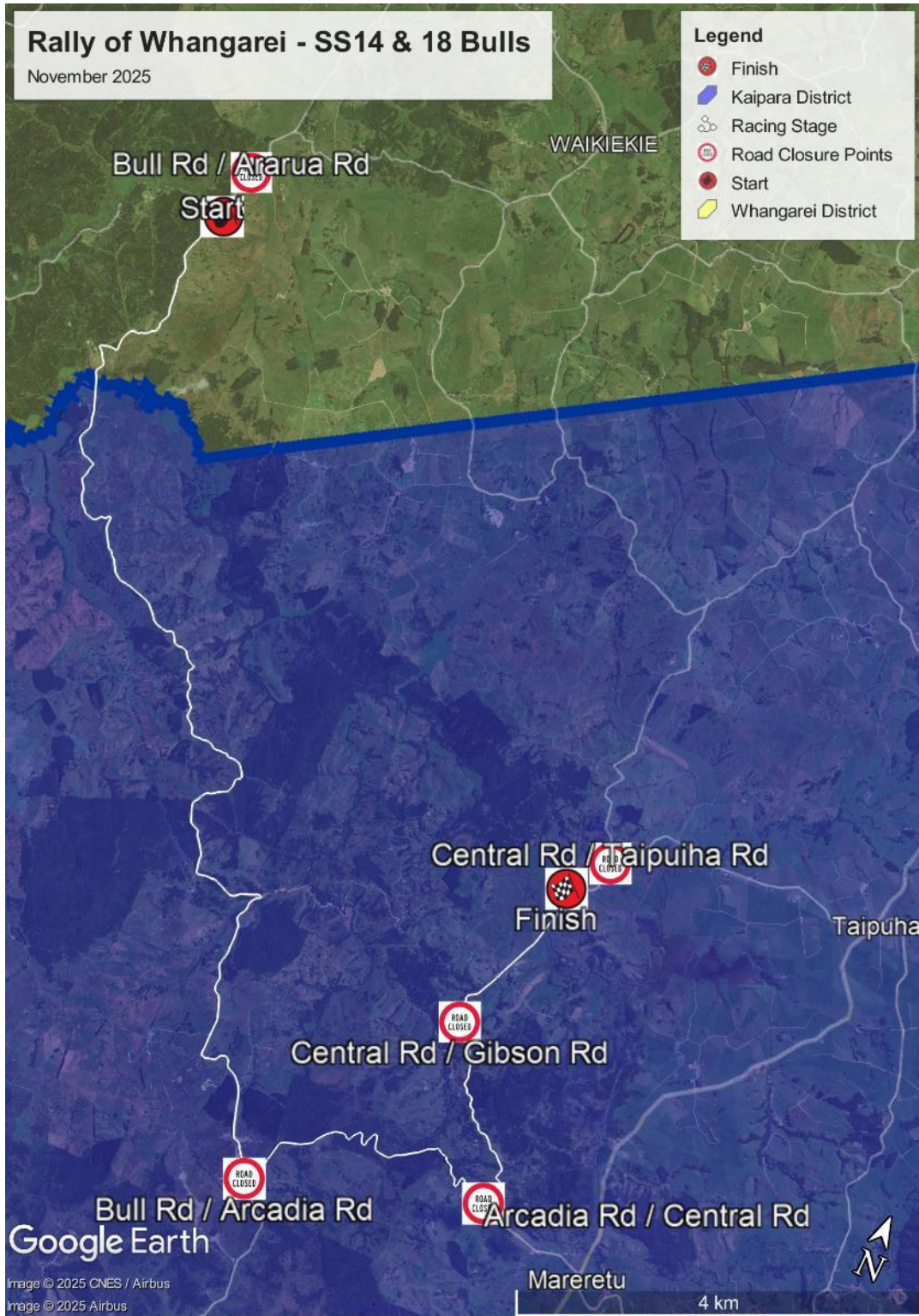
Bull Road from the intersection of WDC / KDC Boundary to the intersection with Arcadia Road.

Arcadia Road from the intersection of Bull Road to the intersection with Central Road.

Central Road from the intersection of Arcadia Road to the intersection with Taipuha Station Road.

- including intersection/s with
 - Gibson Road (No Exit)

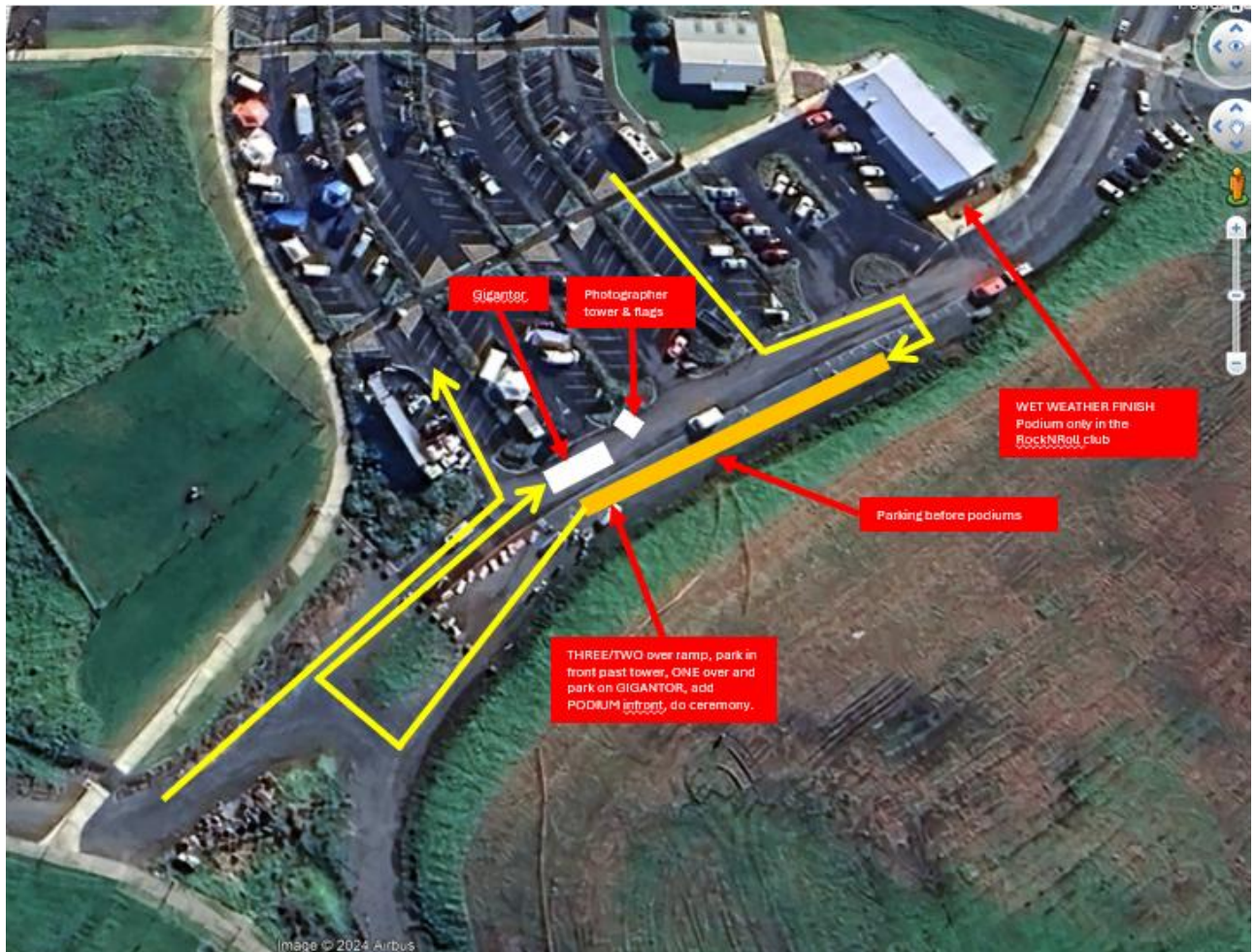
SS14 & 18 BULL MAP



CEREMONIAL FINISH

⇒ SUNDAY 27TH SEPTEMBER 2026

MANAGED BY EXISTING CLOSURE OF THE CARPARK.



PUBLIC LIABILITY INSURANCE CERTIFICATE



Level 32, ANZ Centre
23-29 Albert Street
Private Bag 92055
Auckland 1142, New Zealand
Telephone +64 9 306 0350
www.veroliability.co.nz

Insurance Certificate	Client ID	Agent No
Public & Products Liability	43826	8005746

We, the Insurers, Vero Liability Insurance Limited confirm that Public & Products Liability insurance has been effected on the following basis:

POLICY NUMBER	HO-LPL-6219838	
THE INSURED	Motorsport New Zealand Inc and Member Clubs in respect of Permitted Events Only	
BUSINESS DESCRIPTION	Administration, Governance and Regulation of Motor Sport in New Zealand	
POLICY PERIOD	From 4.00pm	31 December 2025
	To 4.00pm	31 December 2026
LIMIT OF INDEMNITY	\$ 10,000,000	any one Occurrence and for any one Period of Insurance in respect of Products Hazard
EXCESS	\$ 3,500	per Occurrence
POLICY WORDING	VL POL PL-032022	

This certificate is issued as a matter of information only and is subject to the terms and conditions of the issued policy.

Signed for and on behalf of Vero Liability Insurance Limited



Authorised Officer
DTL



18 December 2025

